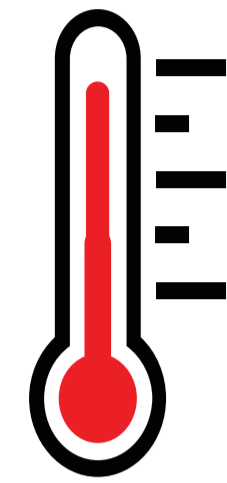
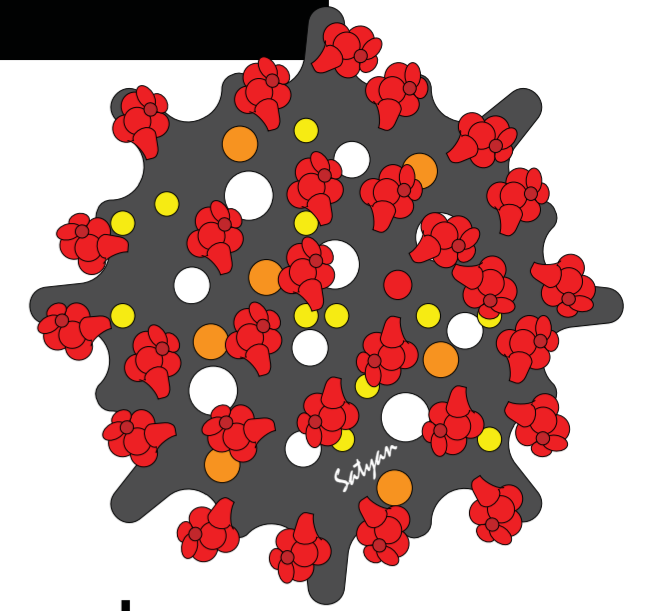


SUSPECTED OR CONFIRMED COVID-19 DURING PREGNANCY: MATERNAL CLINICAL FEATURES, DELIVERY ROOM PRECAUTIONS AND NEONATAL MANAGEMENT

Specially prepared delivery room or operating room preferably with negative pressure
 Obstetric and neonatal providers with full PPE
 Droplet and contact precautions: Gown, glove, mask and eye shield
 Neonatal resuscitation as per current guidelines
 Airborne precautions - especially with suction, intubation, CPAP and other aerosol generating procedures

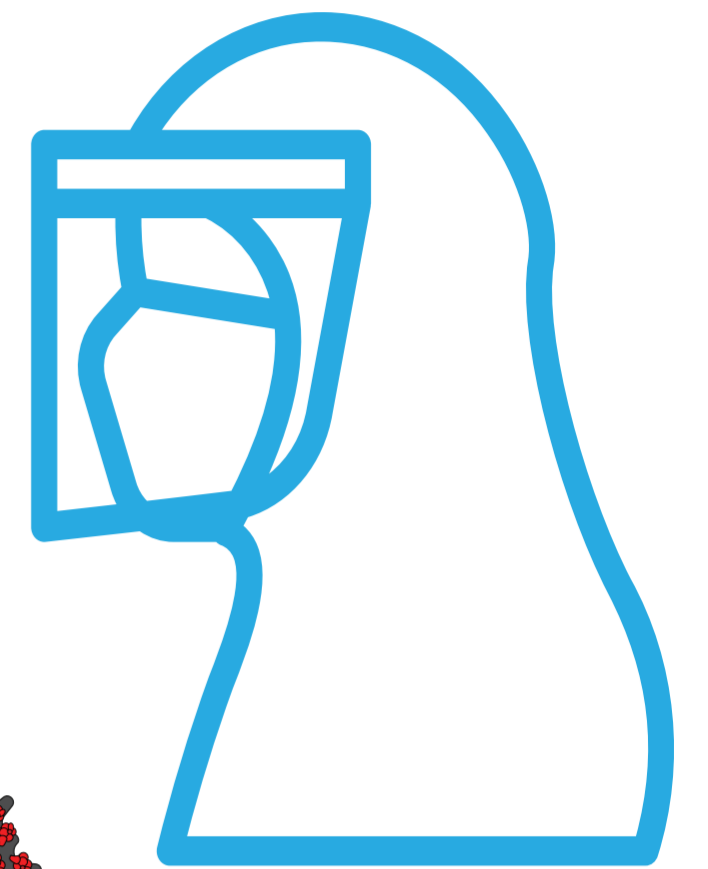
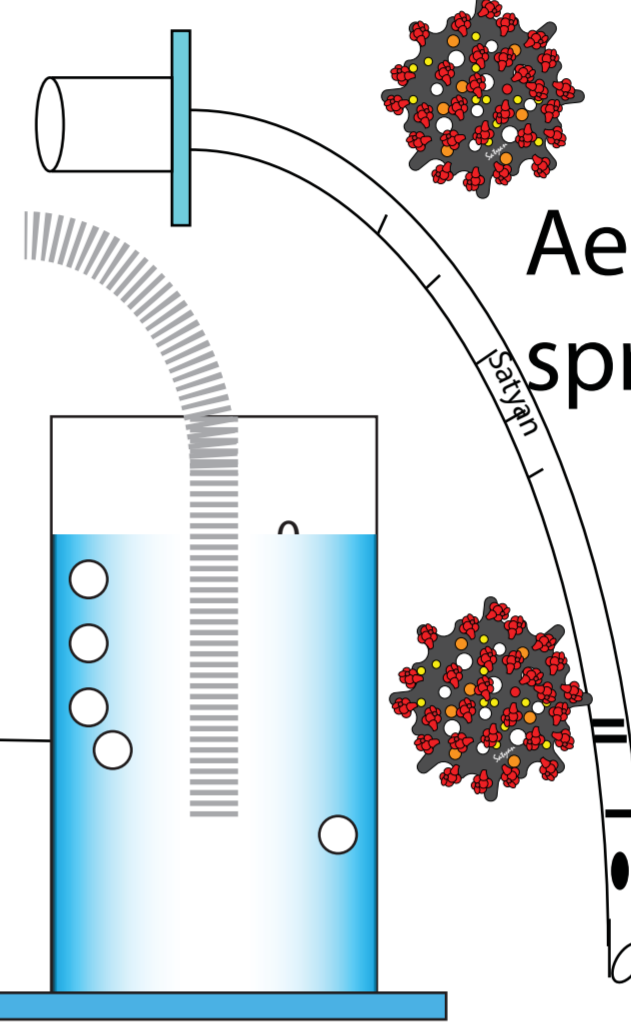


MATERNAL
INFLUENZA
LIKE ILLNESS

Sore throat
Cough
Malaise
Myalgia

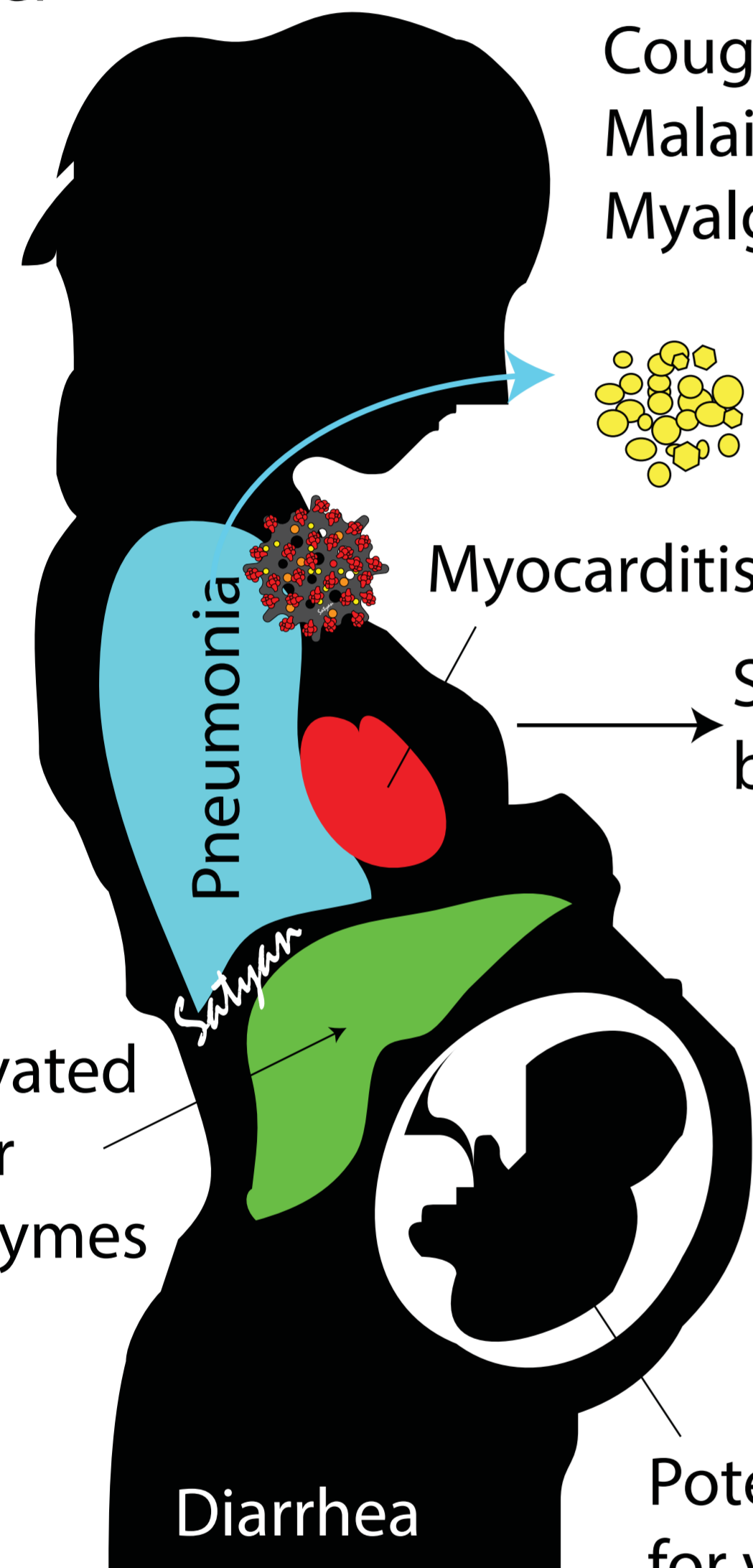
POSSIBLE
MODES OF
TRANSMISSION

Aerosol
generating
procedures:
Suction
Intubation
Extubation
HFNC
N-CPAP



Aerosol spread
 Airborne & contact
precautions - PPE
including eye shield
and N 95 mask or
PAPR, gown and
gloves for delivery
room personnel

Fever

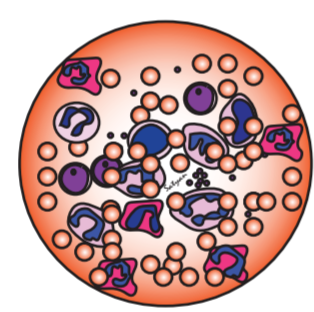


Droplet and
contact spread

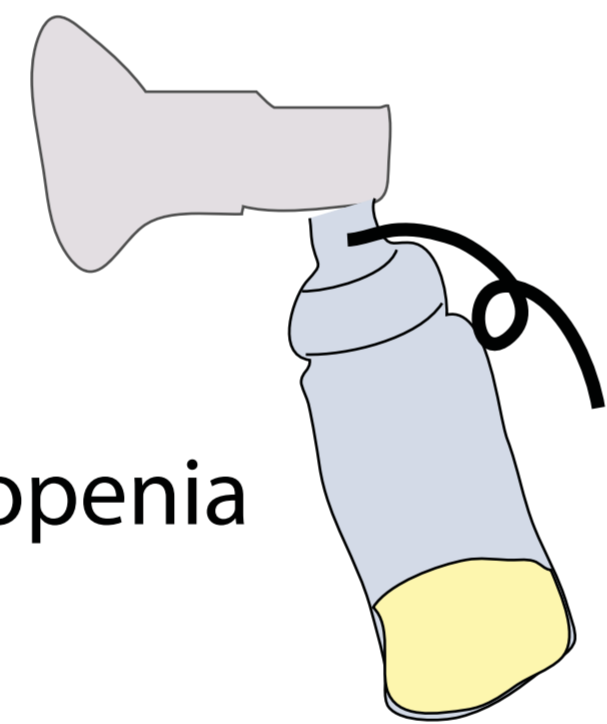
SARS-CoV-2

Potential for
postnatal
infection

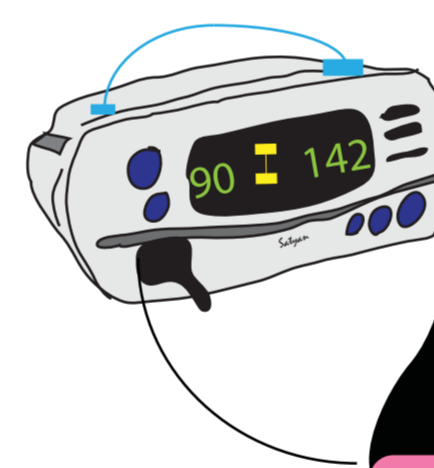
Safety of
breastmilk (?)



Lymphopenia



Expressed
breastmilk
using a
dedicated
pump after
strict hand
hygiene



NEONATES - MOSTLY
ASYMPTOMATIC

(non-specific symptoms
such as temperature
instability, apnea, respiratory
distress, GI symptoms,
hypotension are possible)

NEONATAL MANAGEMENT

Consider temporarily separating
the infant from the mother;

Healthy caregiver may feed
expressed breast milk;

If mother and infant are not
separated, breastfeeding while
wearing a mask and after hand
hygiene may be considered;

Nasopharyngeal / throat
and rectal (optional) swabs
for RT-PCR at 24 h and repeat
X 1 at 48 h;

Isolation pending test results;

POTENTIAL CLINICAL
FEATURES IN COVID-19
POSITIVE PREGNANT
WOMAN (WIDE RANGE)

DELIVERY MODE:

Dictated by usual
obstetric practice

NEWBORN DISCHARGE - as per clinical status; transmission
precautions at home based on infant's test results

