

Uso de una aplicación de Smartphone para evaluar la ictericia neonatal. James A. Taylor y cols. Pediatría 2017; Vol. 140 (3):

Antecedentes: La evaluación de la ictericia en neonatos ambulatorios es problemática. La evaluación visual es inexacta, y las metodologías más exactas son engorrosas y / o costosas. Nuestro objetivo en este estudio fue evaluar la precisión de una tecnología basada en el análisis de imágenes digitales de los recién nacidos obtenidos mediante una aplicación de teléfono inteligente llamada BiliCam.

MÉTODOS: Se obtuvieron imágenes de BiliCam emparejadas y niveles de bilirrubina sérica total (TSB) en una muestra diversa de recién nacidos (<7 días de edad) en 7 sitios en los Estados Unidos. Mediante el uso de software especializado, se extrajeron los datos sobre los valores de color en las imágenes ("características"). Se utilizaron técnicas de aprendizaje automático y análisis de regresión para identificar características para su inclusión en modelos para predecir un nivel estimado de bilirrubina para cada recién nacido. Se calculó la correlación entre los niveles estimados de bilirrubina y los niveles de TSB. Además, la sensibilidad y la especificidad de los niveles estimados de bilirrubina en la identificación de recién nacidos con altos niveles de TSB se calcularon utilizando 2 reglas de decisión recomendadas para la detección de ictericia.

Resultados: Se calcularon los niveles estimados de bilirrubina y se compararon con los niveles de la TSB en una muestra diversa de 530 recién nacidos (20,8% afroamericanos, 26,3% hispanos y 21,2% asiáticos americanos). La correlación general fue de 0.91, y las correlaciones entre los recién nacidos blancos, afroamericanos, hispanos y asiáticos americanos fueron 0.92, 0.90, 0.91 y 0.88, respectivamente. Las sensibilidades de BiliCam en la identificación de recién nacidos con altos niveles de TSB fueron 84,6% y 100%, respectivamente, mediante el uso de 2 reglas de decisión; las especificidades fueron 75,1% y 76,4%, respectivamente.

CONCLUSIONES: BiliCam proporcionó estimaciones precisas de los valores de la TSB, lo que demuestra que una tecnología de bajo costo que utiliza teléfonos inteligentes de productos básicos podría ser utilizado para detectar eficazmente a los recién nacidos por la ictericia.

Use of a Smartphone App to Assess Neonatal Jaundice

James A. Taylor, MD,^a James W. Stout, MD, MPH,^a Lilian de Greef, MS,^a Mayank Goel, PhD,^{a,b} Shwetak Patel, PhD,^a Esther K. Chung, MD, MPH,^{c,d} Aruna Koduri, MD,^e Shawn McMahon, MD,^f Jane Dickerson, PhD,^g Elizabeth A. Simpson, MD,^h Eric C. Larson, PhDⁱ

abstract

BACKGROUND: The assessment of jaundice in outpatient neonates is problematic. Visual assessment is inaccurate, and more exact methodologies are cumbersome and/or expensive. Our goal in this study was to assess the accuracy of a technology based on the analysis of digital images of newborns obtained using a smartphone application called BiliCam.

METHODS: Paired BiliCam images and total serum bilirubin (TSB) levels were obtained in a diverse sample of newborns (<7 days old) at 7 sites across the United States. By using specialized software, data on color values in the images (“features”) were extracted. Machine learning and regression analysis techniques were used to identify features for inclusion in models to predict an estimated bilirubin level for each newborn. The correlation between estimated bilirubin levels and TSB levels was calculated. In addition, the sensitivity and specificity of the estimated bilirubin levels in identifying newborns with high TSB levels were calculated by using 2 recommended decision rules for jaundice screening.

RESULTS: Estimated bilirubin levels were calculated and compared with TSB levels in a diverse sample of 530 newborns (20.8% African American, 26.3% Hispanic, and 21.2% Asian American). The overall correlation was 0.91, and correlations among white, African American, Hispanic, and Asian American newborns were 0.92, 0.90, 0.91, and 0.88, respectively. The sensitivities of BiliCam in identifying newborns with high TSB levels were 84.6% and 100%, respectively, by using 2 decision rules; specificities were 75.1% and 76.4%, respectively.

CONCLUSIONS: BiliCam provided accurate estimates of TSB values, demonstrating that an inexpensive technology that uses commodity smartphones could be used to effectively screen newborns for jaundice.



^aDepartment of Pediatrics, University of Washington, Seattle, Washington; ^bDepartment of Computer Science and Engineering, Carnegie Mellon University, Pittsburgh, Pennsylvania; ^cDepartment of Pediatrics, Thomas Jefferson University, Philadelphia, Pennsylvania; ^dNemours Alfred I. duPont Hospital for Children, Wilmington, Delaware; ^eKaiser Permanente Northern California, San Leandro, California; ^fMaricopa Integrated Health System, Phoenix, Arizona; ^gSeattle Children’s Hospital, Seattle, Washington; ^hChildren’s Mercy Hospital, Kansas City, Missouri; and ⁱDepartment of Computer Science and Engineering, Southern Methodist University, Dallas, Texas

Dr Taylor conceptualized and designed the study, supervised data collection at 1 site, analyzed the study data, and drafted the initial manuscript; Dr Stout assisted in the design of the study, assisted in the interpretation of study data, and critically reviewed the manuscript; Ms de Greef and Drs Goel, Patel, and Larson designed the software used in the technology to assess neonatal jaundice, assisted in the analysis of study data, and critically reviewed the manuscript;

WHAT’S KNOWN ON THIS SUBJECT: Jaundice peaks in many healthy neonates after discharge from their birth hospitalizations. A visual assessment of jaundice in these newborns is inaccurate, with the potential of either missing infants with significant jaundice or unnecessarily obtaining blood for a serum bilirubin level.

WHAT THIS STUDY ADDS: The results of this study suggest that a technology that uses a smartphone application has the potential to be a useful methodology for effectively screening newborns for jaundice.

To cite: Taylor JA, Stout JW, de Greef L, et al. Use of a Smartphone App To Assess Neonatal Jaundice. *Pediatrics*. 2017;140(3):e20170312

Of newborns, >80% develop visual jaundice in the first few days of life.^{1,2} Systematic assessment to identify newborns with significant hyperbilirubinemia is a central focus of care during the birth hospitalization in the United States. In a recent study, respondents from 86% of 60 newborn nurseries across the United States reported that they screened virtually all neonates with either a transcutaneous bilirubin (TcB) or total serum bilirubin (TSB) measurement before discharge.³ Unfortunately, bilirubin levels typically peak in neonates at ~96 hours of life, which is well after most infants are discharged.⁴⁻⁹ Because of this, the American Academy of Pediatrics recommends that newborns discharged before 72 hours of age be seen by a health care provider within the subsequent 48 to 72 hours to assess for jaundice.^{4,6,10} However, accurate assessment of the severity of jaundice in outpatient neonates is problematic. TSB measurement is more difficult in newborns after discharge than during the birth hospitalization.⁴ Although TcB measurement could be a viable option, the high cost of TcB meters limit their widespread use in outpatient settings.^{4,11} Given these obstacles, the outpatient assessment of jaundice in neonates is generally done by a visual inspection of an infant's skin to assess the degree of yellowness.¹¹ However, there is ample evidence that even experienced health care providers cannot accurately estimate the severity of jaundice.¹¹ In studies in which researchers compared the visual assessment of jaundice with TSB levels, correlation coefficients ranged from 0.36 to 0.75 with poor interobserver agreement.¹¹⁻¹⁷

In resource-poor countries, kernicterus continues to be a major and underappreciated source of neonatal morbidity and mortality. An estimated 500 000 newborns each year born in low- and middle-income

countries develop extreme hyperbilirubinemia (EHB) (defined as a TSB level of ≥ 25 mg/dL), leading to 114 000 neonatal deaths and 75 000 cases of kernicterus.¹⁸ A primary reason for this high morbidity and mortality is the inability to measure bilirubin levels in many locations.¹⁹

There is clearly a global need for an inexpensive and widely available technology that could be used to screen newborns for jaundice. Our group has developed BiliCam, which is a technology based on the analysis of digital images obtained with a smartphone application ("app") to provide an estimate of TSB.²⁰ For this study, we used BiliCam to collect data on a large and diverse sample of newborns with the goal of finalizing a robust algorithm for converting image data into an estimated TSB. We postulated that BiliCam would have similar utility to that of TcB measurement as a screening device for jaundice.

METHODS

Description of the Technology

The BiliCam app is designed to obtain images of the skin overlying a newborn's sternum in a standardized manner and transmit the image data via the Internet to a computer server for analysis. For the study, the app was installed on iPhone 5s smartphones. The process of obtaining a set of BiliCam images is initiated by placing a color calibration card (a modified Macbeth Color Checker in the shape of a hollow square) on the newborn's sternum.²¹ The calibration cards are ~6 cm by 6 cm and are held in place with a small amount of neonate-friendly adhesive. The use of the calibration card helps to account for variations in lighting conditions and facilitates image capture and data extraction. The cards are printed on specially coated paper to reduce glare, and color accuracy is checked during the

printing process to insure batch-to-batch stability.

The user starts the app, and a red square appears on the smartphone screen. When this square is properly aligned with the color calibration card and lighting is adequate, the app automatically captures images using the smartphone camera both with and without flash. Flash and nonflash images are obtained at 3 distances from the newborn (6 images total) and sent to the server. The process of obtaining the photos typically takes <60 seconds.

On the server, the red, green, and blue values of pixels from multiple regions of the color calibration card and an area of the newborn's skin in the hollow portion of the card are measured. These measurements are also transformed into additional color representations. These representations, or "features," are entered into an algorithm that is used to estimate a bilirubin value.

Study Procedures

A prospective study was conducted. Participants were healthy, newborn infants <7 days old who were born at ≥ 35 weeks' gestation. Neonates who had received phototherapy were ineligible.

Participants were recruited for the study at 7 sites across the United States, including the University of Washington Medical Center (UWMC) in Seattle, Washington; Thomas Jefferson University Hospital (TJUH) in Philadelphia, Pennsylvania; Seattle Children's Hospital in Seattle, Washington; Kaiser Permanente San Leandro Medical Center (KPSL) in San Leandro, California; Maricopa Integrated Health System (MIHS) in Phoenix, Arizona; McKay-Dee Hospital (MKD) in Ogden, Utah; and Truman Medical Center (TMC) in Kansas City, Missouri. Study participants were enrolled between October 2014 and July 2016.

A variety of enrollment procedures were used. At UWMC and TJUH, newborns were enrolled when they were ≤ 24 hours old, with a follow-up study visit when they were 3 to 5 days old. At the follow-up visit, a set of BiliCam images was obtained, and blood was drawn for a TSB level. At KPSSL and MIHS, BiliCam images were obtained from participants at the time of a blood draw for a TSB level that was ordered because a newborn was clinically jaundiced. Finally, newborns at MKD and TMC were enrolled and BiliCam images were obtained when TSB levels were measured as part of routine screening or if a neonate was clinically jaundiced. Attempts were made to obtain BiliCam images within 2 hours of the blood draw for TSB determination. Blood samples were assayed by the clinical laboratory at each site. The TSB assays at each of the participating sites were run by using the following platforms: at UWMC, Beckman AU680 Total Bilirubin; at TJUH, Roche Cobas 501 Bilirubin Total; at Seattle Children's Hospital, Ortho Vitros 4600 BuBc; at KPSSL, Beckman AU680 Total Bilirubin; at MIHS, Ortho Vitros 5600 BuBc; at MKD, Abbott Architects c8000 or c4000 Total Bilirubin; and at TMC, Roche Cobas Bilirubin Total.

At all sites, parents of participants were asked to provide the race and ethnicity of their infants at the time of enrollment; data on participants' birth dates and times were abstracted from medical records. At UWMC, MIHS, and TJUH, TcB measurements were done for virtually all participants at the time of the blood draw for TSB; TcB measurements were obtained for selected newborns at TMC. Both BiliChek (Philips Respironics, Monroeville, PA) and the Draeger Jaundice Meter JM-103 (Draeger Inc, Telford, PA) brands of TcB meters were used for TcB measurements.

The study was approved by the institutional review boards at each

participating institution, and written, informed consent was obtained from the parents of study newborns.

Algorithm Development

Machine learning and regression analysis techniques were used to identify sets of features that were highly correlated with TSB levels. Models were developed continually during data collection. Features from each of the 6 images obtained of the study participants were used. If any of the 6 images were unusable, a bilirubin level was not estimated. When data collection concluded, a final set of features was selected and included in regression models to determine a BiliCam-estimated bilirubin (BCB) level for each participant by using a 10-fold cross-validation procedure. With this technique, the study sample was randomly divided into 10 equal-sized subgroups (ie, folds) that were stratified by TSB value. One fold was removed from the sample, and data from the other nine folds were used in training a regression model for estimating bilirubin levels. This model was then used to estimate the BCB values for participants in the removed fold. This process was repeated for 10 iterations, successively removing one fold, developing a model by using data from the remaining nine folds, and applying the model to the removed fold. Thus, data from a particular newborn were not used in developing the model that was used to estimate the bilirubin level for that newborn, providing an unbiased evaluation of BiliCam.

Analysis

The primary outcome was the linear correlation between BCB and TSB values; subgroup analyses were conducted for newborns from various racial and ethnic groups. The mean (\pm SD) difference between paired BCB and TSB levels was also calculated. A Bland-Altman analysis was performed; mean bias and limits of agreement were calculated. Similar

analyses were done comparing paired TcB and TSB measurements.

We assessed the utility of BiliCam and TcB as screening tools for identifying newborns with significant jaundice using 2 recommended decision rules.⁴ First, BiliCam and TcB levels were plotted on the Bhutani TSB nomogram.²² A positive test result was a BiliCam or TcB level of ≥ 75 th percentile on the nomogram (ie, in the high-intermediate or high-risk zone), with a positive result being a TSB level of ≥ 95 th percentile (high-risk zone).^{4,23} For the second decision rule, a positive test was a BiliCam or TcB level of ≥ 13 mg/dL to identify a newborn with a TSB value ≥ 17 mg/dL.^{4,24} The sensitivity, specificity, positive predictive value, and negative predictive value were calculated for BiliCam and TcB for each decision rule. We compared the utility of BiliCam and TcB as screening tools for identifying neonates with TSB levels in the high-risk zone on the Bhutani nomogram or a TSB level of ≥ 17 mg/dL by constructing receiver operator characteristic curves and comparing the area under the curve (AUC) for each using the approach described by DeLong et al.²⁵

One study participant had 2 BCB and 2 TSB measurements at different time points. Analyses were conducted by excluding either set of measurements or including both, and the results were virtually identical. No adjustment was made for the 2 measurements from this single participant, and they were considered as separate events.

RESULTS

BiliCam images were obtained for 580 enrolled newborns. A matching TSB level was missing for 8 participants; in 2 newborns, there was a laboratory problem, parents of 2 participants declined the blood draw, and no matching TSB level was obtained for 4 infants. In addition, data on 3 newborns were excluded because of

issues with the consenting process. From the remaining 569 participants, a complete set of BiliCam images was obtained for 530 newborns (93.1% of those who were eligible).

The race and ethnicity of the 530 newborns with complete TSB and BiliCam data are summarized in Table 1. The mean age of these participants at the time that BiliCam images were obtained was 75.2 ± 28.9 hours, with a range of 12 to 163 hours. The time between the TSB blood draw and BiliCam image collection was <2 hours in 515 participants (97.2%); the time difference was <3 hours in the remaining 15 newborns. The mean TSB value in study participants was 10.4 ± 4.4 mg/dL, with a range of 0.6 to 24.8 mg/dL. There were 66 newborns (12.5%) with a TSB level in the high-risk zone on the Bhutani nomogram; 80 participants (15.1%) had TSB levels of ≥ 15.0 mg/dL.

Based on estimates calculated by using a 10-fold cross-validation procedure, the correlation between the BCB level and the paired TSB measurement was 0.91 (95% confidence interval 0.89–0.92). The correlation between BCB and TSB is shown graphically in Fig 1. The correlation coefficients in different racial and ethnic groups are summarized in Table 2. As is shown in the table, the correlation was highest among white neonates and lowest among Asian American newborns. The mean difference between BCB and TSB was 0.01 ± 1.8 mg/dL, with a range of -0.51 to $+6.4$ mg/dL; 91.9% of BCB values were within 3 mg/dL of the paired TSB level, and 73.0% were within 2 mg/dL. A Bland-Altman plot summarizing the differences between BCB and TSB is presented in Fig 2; as shown, the limits of agreement were -3.6 to $+3.6$ mg/dL.

TcB measurements were made for 331 study newborns. Among these infants, the correlation between TcB and TSB was 0.91 (95% confidence

interval 0.89–0.93). The mean TcB-TSB difference was 0.51 ± 1.8 mg/dL, with a range of -4.6 to $+5.9$ mg/dL; the limits of agreement were -3.2 to $+4.2$ mg/dL.

The utility of BiliCam as a screening tool for identifying newborns with significant hyperbilirubinemia is

summarized in Table 3; values for TcB are also shown. As is shown in Table 3, BiliCam had a sensitivity of 84.6% for identifying newborns with a TSB level in the high-risk zone on the Bhutani nomogram and a specificity of 75.1%. The sensitivity of identifying a neonate with at TSB

TABLE 1 Race and Ethnicity of Newborns With TSB and BCB Data

Group	Number ^a	Percentage ^b
White	293	55.4
African American	110	20.8
Asian American	112	21.2
Pacific Islander, Hawaiian native	15	2.8
American Indian, Alaskan native	15	2.8
Other	8 ^c	1.5
Hispanic, Latino ethnicity	139	26.3

^a No race or ethnicity data provided for 1 study participant.

^b Percentages for racial groups add to more than 100% because multiple races were listed for some study participants.

^c Includes 2 participants whose race was described as “mixed,” 1 participant who was listed as “multiracial,” and 5 participants whose parents checked “other” for race but didn’t further specify.

TABLE 2 Correlations Between TSB and BCB Among Study Newborns From Different Racial and Ethnic Groups

Group	Number	Correlation Coefficient	95% CI
All	530	0.91	0.89–0.92
White	293	0.92	0.90–0.93
African American	110	0.90	0.86–0.93
Asian American	112	0.88	0.81–0.91
Hispanic, Latino ethnicity	139	0.91	0.88–0.94

CI, confidence interval.

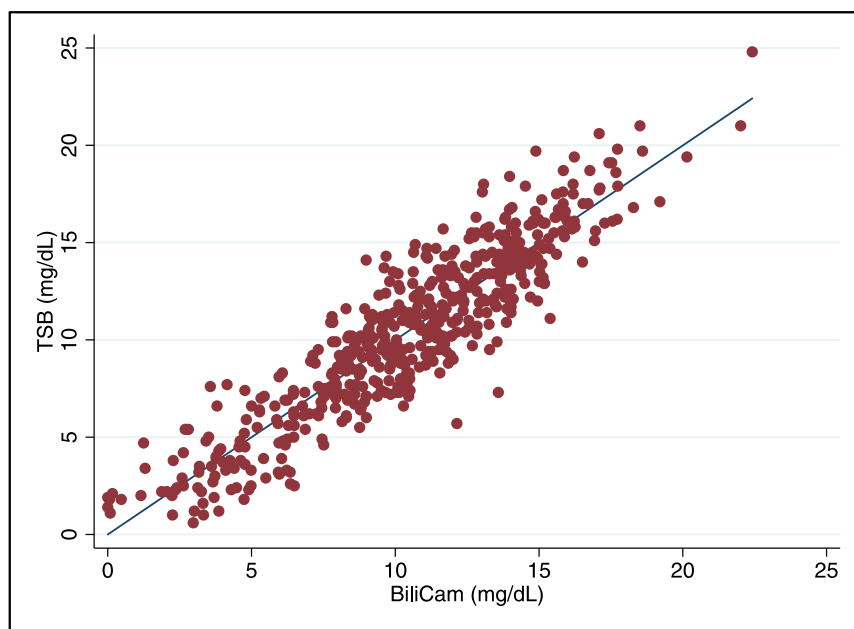


FIGURE 1

The relationship between paired TSB and BCB values in 530 newborns. The linear regression line is shown, along with individual points.

TABLE 3 Utility of BiliCam and TcB as Screening Tools to Identify Newborns With High TSB Values, Defined as a TSB Level in the High-risk Zone on the Bhutani TSB Nomogram or as a TSB Level of ≥ 17.0 mg/dL

Device	Sensitivity (%)	Specificity (%)	PPV (%)	NPV (%)
Outcome = TSB level in high-risk zone on Bhutani TSB nomogram				
BiliCam	84.6	75.1	32.2	97.2
TcB	81.3	82.6	19.1	98.9
Outcome = TSB level of ≥ 17.0 mg/dL				
BiliCam	100	76.4	20.3	100
TcB	100	75.1	13.0	100

PPV, positive predictive value; NPV, negative predictive value.

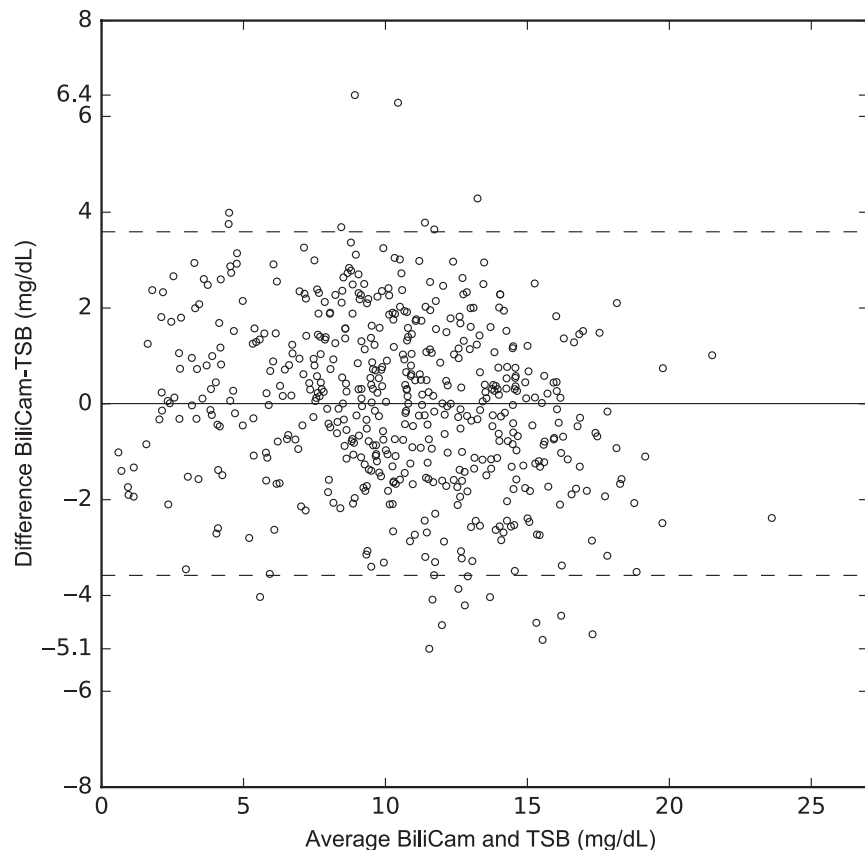


FIGURE 2

A Bland-Altman plot of paired BCB and TSB values. The mean of TSB and BCB values (in mg/dL) is displayed along the x-axis, and the difference of BCB-TSB (mg/dL) is displayed on the y-axis. Horizontal lines denote the mean difference between BCB and TSB values and limits (95% confidence interval) of agreement.

level of ≥ 17.0 mg/dL was 100% with a specificity of 76.4%. A formal comparison of TcB and BiliCam as methods for screening neonates with TSB values in the high-risk zone (≥ 17 mg/dL) was limited to 312 newborns with both TcB and BCB values. Among these participants, the AUC for a high-risk zone TSB level was 0.95 for BiliCam and 0.92 for TcB ($P = .30$); for identifying newborns with a TSB

level of ≥ 17.0 , AUCs were 0.99 and 0.95, respectively ($P = .09$).

DISCUSSION

Our results suggest that a technology based on the analysis of images obtained by using an app on a commodity smartphone provided reasonably accurate estimates of TSB values in newborn infants and had accuracy similar to that of TcB

measurements in study participants. The correlations between BCB and TSB values are also consistent with results of published studies on the accuracy of TcB in estimating bilirubin levels in newborns. The reported correlations between TcB and TSB range from 0.77 to 0.97.^{3,11,23,26–36} Most of these studies were conducted on newborns during their birth hospitalizations. Although there are limited data on the accuracy of TcB measurements in outpatients, in 2 studies in which researchers focused on neonates after hospital discharge, correlations between TcB and TSB were found to be 0.77 and 0.78, respectively.^{35,36} A possible reason for the lower correlations found in outpatient newborns is that TSB levels tend to peak after newborns are typically discharged from their birth hospitalizations.^{4–9} TcB levels have been found to progressively underestimate serum values in neonates with higher TSB levels, particularly ≥ 15.0 mg/dL.^{3,26,37}

Our results suggest that BiliCam does not have adequate accuracy to serve as a standalone methodology to assess jaundice in newborns. Rather, as with TcB meters, BiliCam is best suited as a screening device to aid in determining which neonates require a blood draw for a TSB level, with treatment decisions being based on the TSB level.⁴ Because of this, perhaps the most clinically relevant comparison between BiliCam and TcB is their utility as screening tools for identifying newborns who require a TSB level while obviating the need for a blood draw in most.

In our study, using 2 recommended decision rules, BiliCam and TcB had comparable utility in identifying newborns with high TSB levels. Bhutani et al²³ reported that the BiliChek-brand TcB meter had a sensitivity of 100% and a specificity of 88.1% in identifying newborns with a TSB level in the high-risk zone on the Bhutani nomogram during their birth hospitalizations. In a study evaluating both the BiliChek and JM-103 brands of TcB meters in 2 populations of newborns assessed during their birth hospitalizations, the sensitivity of TcB screening was 94.1% and 91.9%, respectively, for this same outcome.³⁸ However, in a study of outpatient newborns with higher TSB levels, the sensitivity and specificity of TcB screening for identifying newborns with high-risk-zone TSB levels were 79% and 84%, respectively.³⁵ In this same study using a cutoff value of ≥ 13.0 mg/dL to define a positive TcB screen, the sensitivity of TcB screening was 100%, and the specificity was 58% for identifying outpatient neonates with a TSB ≥ 17.0 mg/dL. Overall, these results suggest that BiliCam may be as effective as TcB in identifying newborns in need of a blood draw for a TSB level.

There has been limited previous study on using digital images to estimate bilirubin levels in newborns. Rong et al³⁹ used a system similar to the one we assessed and reported an r^2 of 0.628 (equivalent to $r = 0.79$) between estimated bilirubin and TSB values in 148 term newborns. Leung et al⁴⁰ used a digital camera to obtain images of newborns' sclerae and found a correlation between estimated bilirubin and TSB levels of 0.75.

In evaluating the results of the current study, there are several important caveats to consider. We used a 10-fold cross-validation procedure to prevent overfitting the algorithm for converting image data into an estimated bilirubin level and to provide an unbiased assessment of

the likely accuracy of the technology. Based on the data collected, a single algorithm is being developed that includes data from each of the 6 images obtained of the newborn. This algorithm is used to generate the BCB value, which is sent back to the smartphone via the Internet; the process of extracting the image data, applying the algorithm, and returning the value to the smartphone requires only a few seconds. The accuracy of the developed algorithm and the process of sending the BCB value to the smartphone will need to be validated in a different population of newborns. BCB values were compared with TSB levels that were measured by using different assays from different laboratories. There is more variability in TSB measurements related to laboratory methodology than is generally appreciated.⁴¹ It is possible that the correlations between BCB and TSB would have been higher if only a single laboratory for TSB assay had been used. Although there are many variables to consider when comparing BCB (or TcB) levels and TSB measurements (including infant age, TSB level, and laboratory methodology), the correlation between BCB and TSB tended to be lower in Asian American newborns than in those from other racial and ethnic groups. This will need to be further delineated in future studies. Finally, as with TcB meters, BiliCam was not perfect in identifying newborns with TSB levels in the high-risk zone on the Bhutani nomogram. However, BiliCam and TcB were highly sensitive in identifying newborns with a TSB level of ≥ 17 mg/dL. Using a threshold value of 13 mg/dL for defining a positive BCB or TcB test would eliminate the need for an unnecessary blood draw in the majority of newborns.^{35,38}

Because BiliCam requires no extra equipment besides a smartphone and the color calibration card, it has the potential to transform the outpatient management of jaundiced newborns.

Health care providers evaluating newborns shortly after hospital discharge could use the technology to efficiently determine which infants require a blood draw for a TSB level. BiliCam could be used both in office settings and by nurses and other health care professionals evaluating newborns during home visits. Perhaps most importantly, in low- and middle-income countries with limited resources, BiliCam could be a low-cost technology that is used by health care workers to screen large numbers of newborns for jaundice and effectively identify the few that are at significant risk for EHB. In combination with low-cost phototherapy devices that have now been developed,⁴² BiliCam could thus be part of a system of care that could significantly reduce the morbidity and mortality related to EHB in these areas.

ACKNOWLEDGMENTS

We thank Vickie L. Baer, RN, and Robert D. Christensen, MD, for conducting the study at McKay-Dee Hospital in Ogden, Utah. We also thank Ping-Yu Liu, PhD, for his assistance with the biostatistical analyses of study data.

ABBREVIATIONS

AUC: area under the curve
BCB: BiliCam-estimated bilirubin
EHB: extreme hyperbilirubinemia
KPSL: Kaiser Permanente San Leandro Medical Center
MIHS: Maricopa Integrated Health System
MKD: McKay-Dee Hospital
TcB: transcutaneous bilirubin
TJUH: Thomas Jefferson University Hospital
TMC: Truman Medical Center
TSB: total serum bilirubin
UWMC: University of Washington Medical Center

Drs Chung, Koduri, McMahon, Dickerson, and Simpson assisted in the design of the study, supervised data at 1 site each, and critically reviewed the manuscript; and all authors approved the final manuscript as submitted.

Dr Goel's current affiliation is Department of Computer Science and Engineering, Carnegie Mellon University, Pittsburgh, PA.

DOI: <https://doi.org/10.1542/peds.2017-0312>

Accepted for publication Jun 28, 2017

Address correspondence to James A. Taylor, MD, Department of Pediatrics, University of Washington, Box 354920, Seattle, WA 98115. E-mail: uncjat@uw.edu

PEDIATRICS (ISSN Numbers: Print, 0031-4005; Online, 1098-4275).

Copyright © 2017 by the American Academy of Pediatrics

FINANCIAL DISCLOSURE: Other than those already listed under Potential Conflicts of Interest, the other authors have indicated they have no financial relationships relevant to this article to disclose.

FUNDING: Funded by the *Eunice Kennedy Shriver* National Institute of Child Health and Human Development (R21HD080768) and the University of Washington Wallace H. Coulter Foundation. Funded by the National Institutes of Health (NIH).

POTENTIAL CONFLICT OF INTEREST: Drs Taylor, Stout, and Patel are cofounders of BiliCam, LLC, a company developing the technology described in this study for commercial use; the other authors have indicated they have no potential conflicts of interest to disclose.

REFERENCES

1. Bhutani VK, Stark AR, Lazzaroni LC, et al. PredischARGE screening for severe neonatal hyperbilirubinemia identifies infants who need phototherapy. *J Pediatr*. 2013;162(3):477–482.e1
2. Keren R, Tremont K, Luan X, Cnaan A. Visual assessment of jaundice in term and late preterm infants. *Arch Dis Child Fetal Neonatal Ed*. 2009;94(5):F317–F322
3. Taylor JA, Burgos AE, Flaherman V, et al; Better Outcomes through Research for Newborns Network. Discrepancies between transcutaneous and serum bilirubin measurements. *Pediatrics*. 2015;135(2):224–231
4. Maisels MJ, Bhutani VK, Bogen D, Newman TB, Stark AR, Watchko JF. Hyperbilirubinemia in the newborn infant > or =35 weeks' gestation: an update with clarifications. *Pediatrics*. 2009;124(4):1193–1198
5. Datar A, Sood N. Impact of postpartum hospital-stay legislation on newborn length of stay, readmission, and mortality in California. *Pediatrics*. 2006;118(1):63–72
6. American Academy of Pediatrics Subcommittee on Hyperbilirubinemia. Management of hyperbilirubinemia in the newborn infant 35 or more weeks of gestation [published correction appears in *Pediatrics*. 2004;114(4):1138]. *Pediatrics*. 2004;114(1):297–316
7. De Luca D, Jackson GL, Tridente A, Carnielli VP, Engle WD. Transcutaneous bilirubin nomograms: a systematic review of population differences and analysis of bilirubin kinetics. *Arch Pediatr Adolesc Med*. 2009;163(11):1054–1059
8. Fouzas S, Mantagou L, Skylogianni E, Mantagos S, Varvarigou A. Transcutaneous bilirubin levels for the first 120 postnatal hours in healthy neonates. *Pediatrics*. 2010;125(1). Available at: www.pediatrics.org/cgi/content/full/125/1/e52
9. Kuzniewicz MW, Escobar GJ, Newman TB. Impact of universal bilirubin screening on severe hyperbilirubinemia and phototherapy use. *Pediatrics*. 2009;124(4):1031–1039
10. American Academy of Pediatrics Committee on Fetus and Newborn. Hospital stay for healthy term newborns. *Pediatrics*. 2004;113(5):1434–1436
11. National Collaborating Centre for Women's and Children's Health. *Neonatal Jaundice*. London, England: Royal College of Obstetricians and Gynaecologists; 2010
12. Riskin A, Tamir A, Kugelman A, Hemo M, Bader D. Is visual assessment of jaundice reliable as a screening tool to detect significant neonatal hyperbilirubinemia? *J Pediatr*. 2008;152(6):782–787, 787.e1–e2
13. Moyer VA, Ahn C, Sneed S. Accuracy of clinical judgment in neonatal jaundice. *Arch Pediatr Adolesc Med*. 2000;154(4):391–394
14. Szabo P, Wolf M, Bucher HU, Fauchère JC, Haensse D, Arlettaz R. Detection of hyperbilirubinaemia in jaundiced full-term neonates by eye or by bilirubinometer? *Eur J Pediatr*. 2004;163(12):722–727
15. Madlon-Kay DJ. Recognition of the presence and severity of newborn jaundice by parents, nurses, physicians, and icterometer. *Pediatrics*. 1997;100(3). Available at: www.pediatrics.org/cgi/content/full/100/3/e3
16. Madlon-Kay DJ. Home health nurse clinical assessment of neonatal jaundice: comparison of 3 methods. *Arch Pediatr Adolesc Med*. 2001;155(5):583–586
17. Riskin A, Kugelman A, Abend-Weinger M, Green M, Hemo M, Bader D. In the eye of the beholder: how accurate is clinical estimation of jaundice in newborns? [published correction appears in *Acta Paediatr*. 2005;94(8):1168]. *Acta Paediatr*. 2003;92(5):574–576
18. Bhutani VK, Zipursky A, Blencowe H, et al. Neonatal hyperbilirubinemia and Rhesus disease of the newborn: incidence and impairment estimates for 2010 at regional and global levels. *Pediatr Res*. 2013;74(suppl 1):86–100
19. Slusher TM, Zipursky A, Bhutani VK. A global need for affordable neonatal jaundice technologies. *Semin Perinatol*. 2011;35(3):185–191
20. de Greef L, Goel M, Seo MJ, et al. BiliCam: using mobile phones to monitor newborn jaundice. In: *Proceedings of the 2014 ACM*

International Joint Conference on Pervasive and Ubiquitous Computing (UbiComp '14); September 13–17, 2014; Seattle, WA. 331–342

21. Denstman H. Macbeth Color Checker color chart. *Ind Photogr.* 1977;26: 56–59
22. Bhutani VK, Johnson L, Sivieri EM. Predictive ability of a predischarge hour-specific serum bilirubin for subsequent significant hyperbilirubinemia in healthy term and near-term newborns. *Pediatrics.* 1999;103(1):6–14
23. Bhutani VK, Gourley GR, Adler S, Kreamer B, Dalin C, Johnson LH. Noninvasive measurement of total serum bilirubin in a multiracial predischarge newborn population to assess the risk of severe hyperbilirubinemia. *Pediatrics.* 2000;106(2). Available at: www.pediatrics.org/cgi/content/full/106/2/e17
24. Maisels MJ. Transcutaneous bilirubin measurement: does it work in the real world? *Pediatrics.* 2015;135(2):364–366
25. DeLong ER, DeLong DM, Clarke-Pearson DL. Comparing the areas under two or more correlated receiver operating characteristic curves: a nonparametric approach. *Biometrics.* 1988;44(3):837–845
26. Engle WD, Jackson GL, Sendelbach D, Manning D, Frawley WH. Assessment of a transcutaneous device in the evaluation of neonatal hyperbilirubinemia in a primarily Hispanic population. *Pediatrics.* 2002;110(1, pt 1):61–67
27. Ebbesen F, Rasmussen LM, Wimberley PD. A new transcutaneous bilirubinometer, BiliCheck, used in the neonatal intensive care unit and the maternity ward. *Acta Paediatr.* 2002;91(2):203–211
28. Samanta S, Tan M, Kissack C, Nayak S, Chittick R, Yoxall CW. The value of Bilicheck as a screening tool for neonatal jaundice in term and near-term babies. *Acta Paediatr.* 2004;93(11):1486–1490
29. Maisels MJ, Ostrea EM Jr, Touch S, et al. Evaluation of a new transcutaneous bilirubinometer. *Pediatrics.* 2004;113(6):1628–1635
30. Sanpavat S, Nuchprayoon I. Noninvasive transcutaneous bilirubin as a screening test to identify the need for serum bilirubin assessment. *J Med Assoc Thai.* 2004;87(10):1193–1198
31. Sanpavat S, Nuchprayoon I. Comparison of two transcutaneous bilirubinometers—Minolta AirShields Jaundice Meter JM103 and Spectrx Bilicheck—in Thai neonates. *Southeast Asian J Trop Med Public Health.* 2005;36(6):1533–1537
32. Rubaltelli FF, Gourley GR, Loskamp N, et al. Transcutaneous bilirubin measurement: a multicenter evaluation of a new device. *Pediatrics.* 2001;107(6):1264–1271
33. Boo NY, Ishak S. Prediction of severe hyperbilirubinaemia using the Bilicheck transcutaneous bilirubinometer. *J Paediatr Child Health.* 2007;43(4):297–302
34. Slusher TM, Angyo IA, Bode-Thomas F, et al. Transcutaneous bilirubin measurements and serum total bilirubin levels in indigenous African infants. *Pediatrics.* 2004;113(6):1636–1641
35. Engle WD, Jackson GL, Stehel EK, Sendelbach DM, Manning MD. Evaluation of a transcutaneous jaundice meter following hospital discharge in term and near-term neonates. *J Perinatol.* 2005;25(7):486–490
36. Maisels MJ, Engle WD, Wainer S, Jackson GL, McManus S, Artinian F. Transcutaneous bilirubin levels in an outpatient and office population. *J Perinatol.* 2011;31(9):621–624
37. Maisels MJ. Managing the jaundiced newborn: a persistent challenge. *CMAJ.* 2015;187(5):335–343
38. Taylor JA, Burgos AE, Flaherman V, et al; BORN Investigators. Utility of decision rules for transcutaneous bilirubin measurements. *Pediatrics.* 2016;137(5):e20153032
39. Rong ZH, Luo F, Ma LY, et al. Evaluation of an automatic image-based screening technique for neonatal hyperbilirubinemia [in Chinese]. *Zhonghua Er Ke Za Zhi.* 2016;54(8):597–600
40. Leung TS, Kapur K, Guillian A, et al. Screening neonatal jaundice based on the sclera color of the eye using digital photography. *Biomed Opt Express.* 2015;6(11): 4529–4538
41. Lo SF, Jendrzyszczak B, Doumas BT; College of American Pathologists. Laboratory performance in neonatal bilirubin testing using commutable specimens: a progress report on a College of American Pathologists study. *Arch Pathol Lab Med.* 2008;132(11):1781–1785
42. D-Rev. Brilliance: world-class jaundice treatment at an affordable price. Available at: <http://d-rev.org/projects/newborn-health/>. Accessed March 27, 2017

Use of a Smartphone App to Assess Neonatal Jaundice

James A. Taylor, James W. Stout, Lilian de Greef, Mayank Goel, Shwetak Patel, Esther K. Chung, Aruna Koduri, Shawn McMahon, Jane Dickerson, Elizabeth A. Simpson and Eric C. Larson

Pediatrics 2017;140;; originally published online August 25, 2017;
DOI: 10.1542/peds.2017-0312

Updated Information & Services	including high resolution figures, can be found at: /content/140/3/e20170312.full.html
References	This article cites 39 articles, 17 of which can be accessed free at: /content/140/3/e20170312.full.html#ref-list-1
Subspecialty Collections	This article, along with others on similar topics, appears in the following collection(s): Fetus/Newborn Infant /cgi/collection/fetus:newborn_infant_sub Hyperbilirubinemia /cgi/collection/hyperbilirubinemia_sub Neonatology /cgi/collection/neonatology_sub
Permissions & Licensing	Information about reproducing this article in parts (figures, tables) or in its entirety can be found online at: /site/misc/Permissions.xhtml
Reprints	Information about ordering reprints can be found online: /site/misc/reprints.xhtml

PEDIATRICS is the official journal of the American Academy of Pediatrics. A monthly publication, it has been published continuously since 1948. PEDIATRICS is owned, published, and trademarked by the American Academy of Pediatrics, 141 Northwest Point Boulevard, Elk Grove Village, Illinois, 60007. Copyright © 2017 by the American Academy of Pediatrics. All rights reserved. Print ISSN: 0031-4005. Online ISSN: 1098-4275.

American Academy of Pediatrics

DEDICATED TO THE HEALTH OF ALL CHILDREN™



PEDIATRICS®

OFFICIAL JOURNAL OF THE AMERICAN ACADEMY OF PEDIATRICS

Use of a Smartphone App to Assess Neonatal Jaundice

James A. Taylor, James W. Stout, Lilian de Greef, Mayank Goel, Shwetak Patel,
Esther K. Chung, Aruna Koduri, Shawn McMahon, Jane Dickerson, Elizabeth A.
Simpson and Eric C. Larson

Pediatrics 2017;140;; originally published online August 25, 2017;
DOI: 10.1542/peds.2017-0312

The online version of this article, along with updated information and services, is
located on the World Wide Web at:
</content/140/3/e20170312.full.html>

PEDIATRICS is the official journal of the American Academy of Pediatrics. A monthly publication, it has been published continuously since 1948. PEDIATRICS is owned, published, and trademarked by the American Academy of Pediatrics, 141 Northwest Point Boulevard, Elk Grove Village, Illinois, 60007. Copyright © 2017 by the American Academy of Pediatrics. All rights reserved. Print ISSN: 0031-4005. Online ISSN: 1098-4275.

American Academy of Pediatrics

DEDICATED TO THE HEALTH OF ALL CHILDREN™

